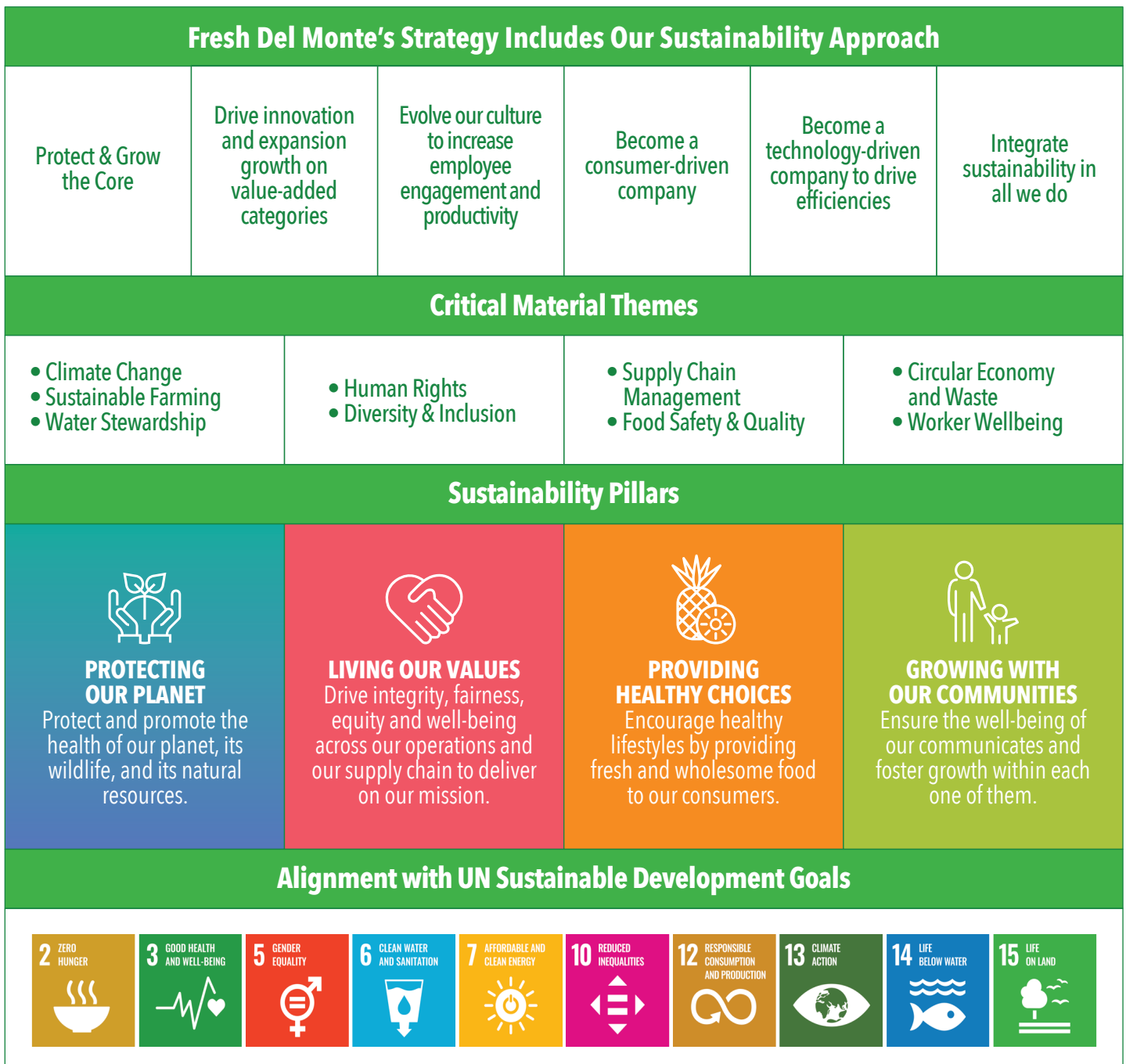


Fresh Del Monte's Ongoing Commitment to Sustainability

An overview of current progress toward 2030 goals

At Fresh Del Monte, our sustainability efforts are rooted in every fiber of our being - from our farming operations to our vertically-integrated supply chain to our communities. Our efforts in 2021 reflect our growing commitment to sustainability.

In 2021, we achieved 80% progress towards our SBTi* approved 2030 goal in the reduction of our Scope 1 and 2 greenhouse gas emissions; we diverted 95% of our food waste from landfill, and 82% of our global product volume was certified as sustainably grown by a third-party. These are just a few of the achievements we highlight below and in our [2021 Sustainability Report](#). Our hope is that we continue to improve and inspire others so that together we can build a *Brighter World Tomorrow™*.




*Science Based Targets initiative




2021 Sustainability pillars progress


PROGRESS TO GOALS


| | | |
|--|---|--|
|  <p>PROTECTING OUR PLANET</p> | 2023 Target | |
| | <ul style="list-style-type: none"> At least 65% of sourced carton boxes globally will have to be certified as responsibly sourced (FSC, PEFC, SFI) | TO UPDATE IN 2022 |
| | 2025 Targets | |
| | <ul style="list-style-type: none"> Reduce Scope 1 emissions from vessels by 10% | ACHIEVED |
| | <ul style="list-style-type: none"> Plant or donate 2.5M trees | 65% |
| | <ul style="list-style-type: none"> Monitor 100% protected areas, species inventory in reserves | 67% |
| | <ul style="list-style-type: none"> Reduce virgin plastic in consumer packaging by 25% | TO UPDATE IN 2022 |
| | 2026 Target | |
| | <ul style="list-style-type: none"> Double recycled content in highly consumed secondary packaging | 27% |
| | 2027 Target | |
| | <ul style="list-style-type: none"> Double returnable plastic crates used | 4% |
| | 2030 Targets | |
| | <ul style="list-style-type: none"> Climate – Reduce GHG Emissions, Science-Based Target Initiative alignment <ul style="list-style-type: none"> Scope 1 + 2 = by 27.5% Scope 3 by 12.3% Implement regenerative and soil health practices at 100% of farms Improve water use efficiency in owned farming operations by 10% 80% of associate growers implementing water use efficiency practices Reduce food loss and organic waste to landfill by 50% | <ul style="list-style-type: none"> 80% 2% 10% 7% 2% ACHIEVED |
| | 2021 Highlights | |
| | <ul style="list-style-type: none"> Received approval from the Science-Based Target initiative for climate targets. Invested \$5 million in water infrastructure upgrades at our facilities. Established a new collaboration with the German Agency for International Cooperation (GIZ) with a three-year initiative in Costa Rica and Guatemala to protect biodiversity and ecosystems within the value chains of conventional bananas and pineapples. Generated energy equivalent to 737 homes' electricity use for one year with the wind turbine in Gonzales, CA. Since 2016, Fresh Del Monte has planted more than 1.6 million trees. Decreased overall water withdrawal by 26% across our operations | |



PROGRESS TO GOALS

| | | |
|---|---|--------------------------|
|  <p>LIVING OUR VALUES</p> | 2030 Target | |
| | <ul style="list-style-type: none"> • Improve employee satisfaction scores. | TO UPDATE IN 2022 |
| | 2021 Highlights | |
| | <ul style="list-style-type: none"> • Our DEI senior leadership council connected our diversity and inclusion efforts to our overall business strategy, including goals and progress trackers. • Our Board of Directors added two female members in 2021. • Annual Code of Conduct training added to the e-Learning platform. • Conducted 83 Human Rights Impact Assessments. • Supported efforts toward vaccination: <ul style="list-style-type: none"> • In Kenya, more than 6,000 employees and community members were vaccinated at our medical center. • In Guatemala, our team supported the Ministry of Public Health and Social Assistance effort that vaccinated more than 25,000 people. • In the Philippines, more than 9,600 employees were vaccinated with the first and second doses. | |

| | | |
|--|--|------------|
|  <p>PROVIDING HEALTHY CHOICES</p> | 2025 Target | |
| | <ul style="list-style-type: none"> • Achieve 100% of global product volume certified as sustainably grown by a third-party. | 82% |
| | 2021 Highlights | |
| | <ul style="list-style-type: none"> • We received a patent for our Vintage Ruby™ pineapple, a fruit in its mature state that holds a bright reddish-purple shell and beautiful yellow pulp. • Our pipeline of cutting-edge science is bioengineering to increase the nutritional value of pineapples and make bananas more disease resistant. • We released Better Pasta and Nourish Bowls providing consumers plant-based alternatives. | |

| | | |
|--|--|-----------------|
|  <p>GROWING WITH OUR COMMUNITIES</p> | 2025 Targets | |
| | <ul style="list-style-type: none"> • Support 300 community projects that leave lasting change. | ACHIEVED |
| | <ul style="list-style-type: none"> • Provide education to 20,000 students and adult learners. | ACHIEVED |
| | <ul style="list-style-type: none"> • Contribute to one green economic recovery project in Latin America. | 20% |
| | 2021 Highlights | |
| | <ul style="list-style-type: none"> • 96% of our volume is certified under Global Good Agricultural Practices. • We began a multiyear project to take a modern technological approach to track elements of our value chain. • Growers in Guatemala are investing in the optimization of irrigation water systems. • Costa Rica operations received the Occupational Risk Preventative Management System award from the Costa Rica National Insurance Institute. | |

